

Flexible waterproofing slurry

# PCI Seccoral<sup>®</sup> 1K

under ceramic coverings on balconies,  
terraces, in shower facilities

**NEW formulation**  
significantly improved processing comfort



With official test certificates.

## Fields of application

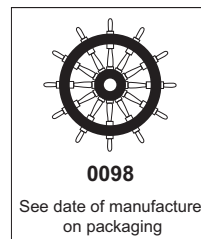
- For indoor and outdoor use.
- For walls and floors.
- For flexible waterproofing under tiles at cantilever balconies, on terraces, in shower facilities.
- For waterproofing solid non-drinking water tanks or swimming pools up to a depth of water of 8 meters.
- Suitable for water exposure classes W0-I, W1-I, W2-I, W3-I in accordance with DIN 18534; DIN 18531-5 (e.g. balconies etc.); DIN 18533 (building elements in contact with soil); DIN 18535 (swimming pools and tanks).
- For waterproofing in accordance with the Austrian Standard B 3407 exposure classes W1 - W6; in W5 without increased chemical exposure.
- For bonding PCI Pecilastic W waterproofing membrane.
- For sealing butt joints and connections of the waterproofing membrane PCI Pecilastic W/U.
- Can take mechanical loads up to use class III in accordance with the ZDB code of practice "Hoch belastete Beläge" (coverings subject to heavy duty exposure).

## Features and benefits

- Excellent convenient application due to very creamy consistency.
- Fast drying, can be tiled after five hours.
- Single component, requires on-site mixing with water only.
- Crack bridging, highly reliable if cracks in the substrate form at a later stage.
- Reliable bond, no special primer or bonding slurry required.
- Creamy and workable consistency, easy to apply by brush, roller or trowel.
- Frostproof transportation.
- Pervious to water vapor.
- Can be applied by spray gun.
- Low odor and dust.
- Very low emissions PLUS, GEV-EMICODE EC 1 PLUS.



PCI Seccoral 1K - creamy consistency for highest convenient application.



CERTIFIED PRODUCT



<b>CE</b>	
1212	
<b>PCI Augsburg GmbH</b> Piccardstraße 11 D-86159 Augsburg 13 DE0100/03	
<b>PCI Seccoral 1K (DE0100/03)</b> EN 14891:2012+AC:2012	
Liquid-applied water impermeable product for installations beneath ceramic tiling (bonded with PCI C2, C2F or R2 adhesives in accordance with EN 12004) EN 14891 CM 01P	
Initial tensile adhesion strength	≥ 0.5 MPa
Tensile adhesion strength after water contact	≥ 0.5 MPa
Tensile adhesion strength after heat ageing	≥ 0.5 MPa
Tensile adhesion strength after contact with lime water	≥ 0.5 MPa
Waterproofing	No penetration
Crack bridging ability at low temperature	≥ 0.75 mm at -5 °C
Tensile adhesion strength after freeze-thaw cycles	≥ 0.5 MPa
Dangerous substances	Comply with 4.2 (EN 14891)

## Technical data

### Material

Material base	Fine cement mortar with elastifying polymers. Does not contain harmful silica dust.
Color	grey
Density of mixed material	approx. 1.5 g/cm <sup>3</sup>
Shelf life	min. 9 months; store dry, no permanent storage over +30°C
Packaging size	15 kg PE lined heavy duty paper bag stock no. 1810/1 3.5 kg bag stock no. 1811/8

### Application

A dry layer thickness of at least 2 mm is required for all applications.

**In accordance with DIN 18534** (Waterproofing for indoor applications) **Part 3:** Waterproofing with liquid-applied waterproofing materials in conjunction with tiles and paving (AIV-F)

- Water exposure class **W0-I: low** water exposure; areas infrequently exposed to spray water
- Water exposure class **W1-I: moderate** water exposure; areas frequently exposed to spray water or infrequently exposed to service water, without intensification by exposure to standing water
- Water exposure class **W2-I: high** water exposure; areas frequently exposed to spray water and/or service water, with more intensive exposure to standing water at certain times, especially on floors
- Water exposure class **W3-I: very high** water exposure; surfaces with very frequent or long-lasting exposure to spray water and/or service water and/or water from intensive cleaning processes, intensified by standing water

\*PCI Seccoral 1K is not suitable for use on surfaces exposed to chemicals.

**In accordance with DIN 18531** (Waterproofing of roofs, balconies and walkways) **Part 5:** Balconies and walkways (AIV-F)

**In accordance with DIN 18533** (Waterproofing of elements in contact with soil) **Part 3:** Waterproofing with liquid-applied waterproofing materials

- Water exposure class **W1-E:** soil moisture and non-pressing water
- Water exposure class **W4-E:** spray water on wall plinths and capillary water in and under walls in contact with the soil

**In accordance with DIN 18535** (Waterproofing of tanks and pools) **Part 3** Waterproofing with liquid-applied waterproofing materials

Consumption of PCI Seccoral 1K powder approx. 800 g/m<sup>2</sup>  
when gluing PCI Pecilastic W

Consumption of PCI Seccoral 1K powder approx. 2.5 kg/m<sup>2</sup>  
at 2 mm dry layer thickness

Coverage at 2.0 mm dry layer thickness	15 kg PCI Seccoral 1K cover approx. 6.0 m <sup>2</sup>	3.5 kg PCI Seccoral 1K cover approx. 1.3 m <sup>2</sup>
---	---	--

Quantity of gauging water

- |                                      |                            |
|--------------------------------------|----------------------------|
| - application by brush and/or roller | 1 kg powder + 320 ml water |
|                                      | 3.5 kg bag + 1.1 l water   |
|                                      | 15 kg bag + 4.8 l water    |
| - application by trowel              | 1 kg powder + 250 ml water |
|                                      | 3.5 kg bag + 0.9 l water   |
|                                      | 15 kg bag + 3.75 l water   |

Slake time approx. 3 minutes

Processing time\* approx. 45 minutes

Processing temperature +5°C to +25°C (substrate temperature)

Rainproof

- at +5°C approx. 10 hours
- at +20°C approx. 5 hours

Setting time\*

- walkable after approx. 5 hours
- can be tiled after approx. 5 hours
- exposure to water after approx. 7 days

Temperature resistance\* -20°C to +80°C

\* Consumption might increase with rough substrates. An additional 25% of the minimum dry layer thickness should therefore be considered in accordance with the standard regulation. At +23°C and 50% relative humidity.

## Test certificates

- Official test certificates in accordance with the test principles for waterproofing products bonded with tiles and flagstones. All test certificates are available under [www.pci-augsburg.eu](http://www.pci-augsburg.eu).

## Preparation of substrate

The substrate must be structurally sound, mainly smooth and fine-pored in the surface. Remove honeycombs, gaping cracks and ridges, dust, water repellents, forming oil and other residues which could impair adhesion. Fill voids and honeycombs on walls with PCI Polycrret 5 concrete filler. Prior to being coated, foamed slag bricks and

hollow concrete blocks must be plastered/rendered in accordance with mortar group CS III to DIN 998-1. Break edges and round grooves flush with a minimum radius of 4 cm. Form coverings with site-mixed mortar or PCI Repafix repair mortar. Prewet the cementitious substrate; it must be damp at the time of application, but not overwatered.

Prime mastic asphalt screeds indoors and rough-ground anhydrite screeds and/or gypsum-based flowable screeds with undiluted PCI Gisogrund or PCI Gisogrund Rapid. Allow primer to dry. Anhydrite screeds and/or gypsum based screeds indoors must not have a residual moisture content exceeding 0.5% (measured with CM meter).

## Application procedure

- Use a lambskin roller to apply PCI Seccoral 1K to the substrate for gluing PCI Pecilastic W waterproofing membrane. Then install PCI Pecilastic W within the open time and press on using e.g. a smoothing trowel. Laying tiles can be started after approx. 16 hours.
- A minimum of two layers is required for the application of PCI Seccoral 1K depending on the application method. Ensure full coverage of the entire surface. The finished coat must have the required minimum thickness over its entire area.

### 1 Mixing

Fill gauging water (see „Technical Data/Application“) and PCI Seccoral 1K in an adequate mixing bucket and mix until free of lumps using a suitable paddle (e.g. from Collomix) attached to an electric drill. Leave to stand for approx. 3 minutes and remix briefly.

**2** The first coat in thinner consistency (water quantity 290 ml/kg of PCI Seccoral 1K powder) is applied by brush/roller or as a scratch coat until the entire surface is saturated. Make sure that corners and rounded edges are thoroughly covered. Allow base coat to dry.

**3** Waterproof pipe culverts and floor drains with PCI Pecitape 10 x 10 and/or PCI Pecitape 42.5 x 42.5. Waterproof corner joints and floor/wall junctions

with PCI Pecitape 120 unless no coving is formed. Press PCI Pecitape 120 into the first coat and cover it by applying a second coat.

**4** When the first coat has cured, further coatings can be applied by trowel or brush until the required layer thickness is obtained.

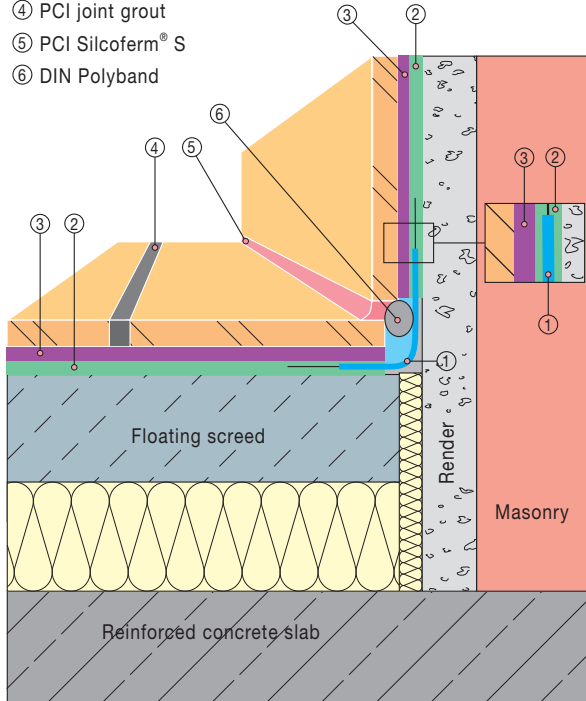
### 5 Laying ceramic tiles

Ceramic tiles can be laid on the walkable PCI Seccoral 1K waterproofing slurry using PCI Nanolight, PCI Flexmörtel S1, PCI Flexmörtel S1 Flott, PCI Flexmörtel S1 Rapid and/or PCI Flexmörtel Premium.

A void-free application is required in the exterior.

**Detail: Floor / wall connection**

- ① PCI Pectape® 120
- ② Waterproofing layer:  
PCI Seccoral® 1K
- ③ Tile adhesive:  
PCI Flexmörtel, PCI Nanolight® and/or PCI Carraflex®,  
on waterproofing layer PCI Seccoral® 1K
- ④ PCI joint grout
- ⑤ PCI Silcoferm® S
- ⑥ DIN Polyband

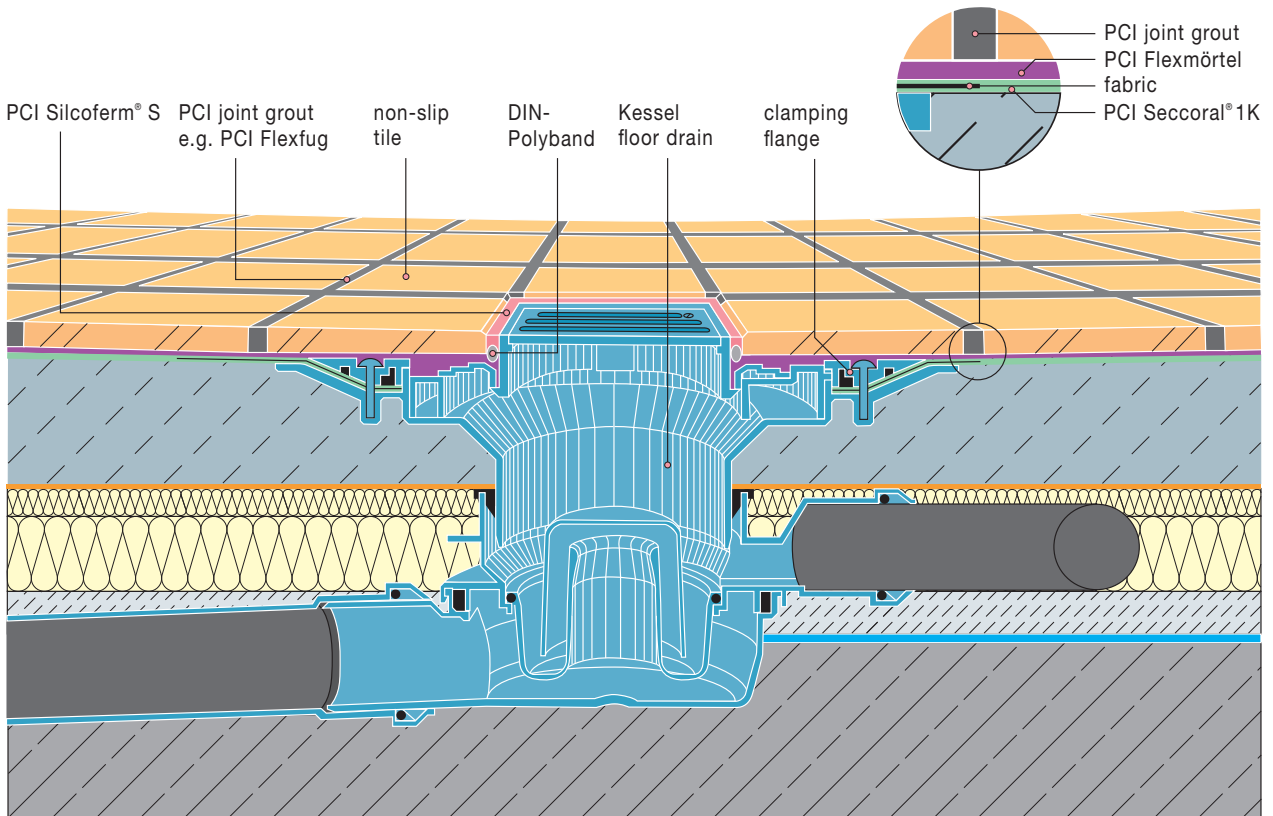


**Packaging sizes**

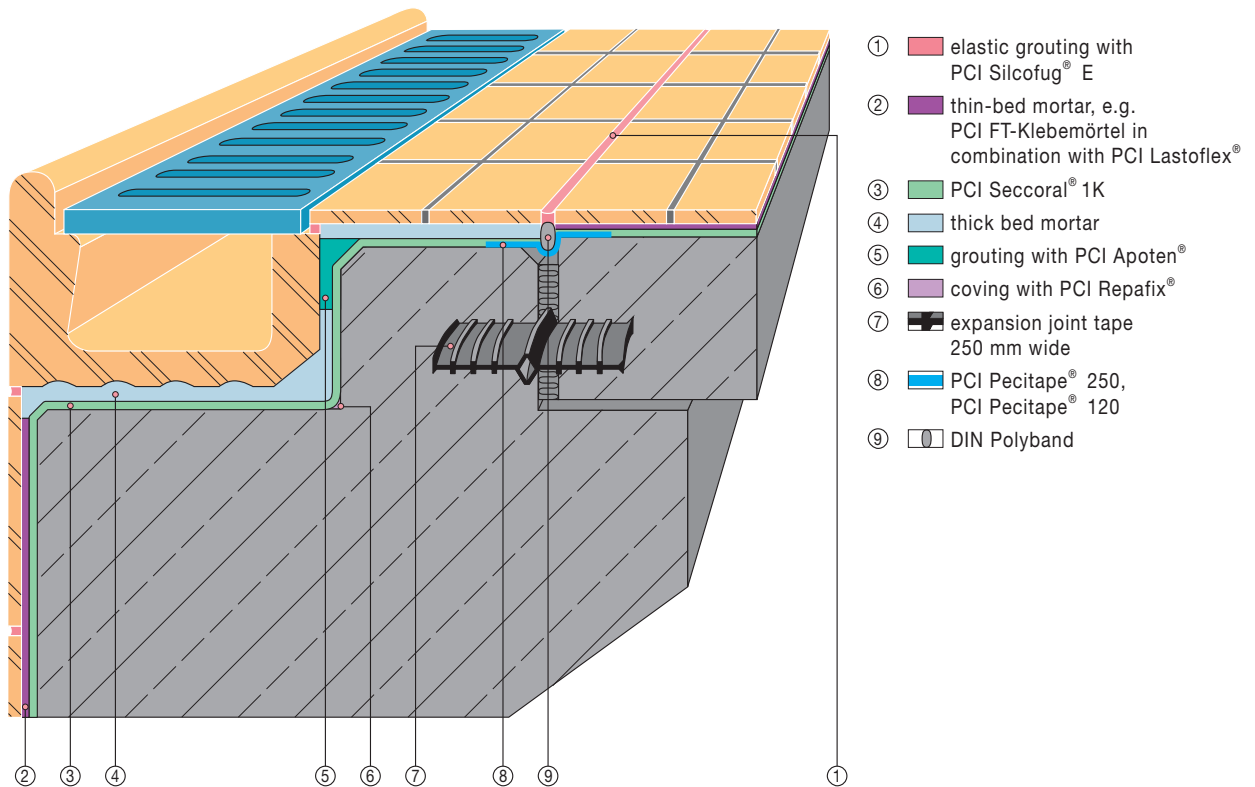
**Waterproofing tapes and shaped parts:**

- Special waterproofing tape PCI Pectape 120 for corner and connection joints
- 50 m roll  
stock no. 1013/6
- 10 m roll  
stock no. 1014/3
- Prefabricated external corner PCI Pectape 90° A  
stock no. 1018/1
- Prefabricated internal corner PCI Pectape 90° I  
stock no. 1017/4
- Special waterproofing collar PCI Pectape 42.5 x 42.5  
stock no. 1016/7
- Special waterproofing collar PCI Pectape 10 x 10  
stock no. 1015/0

**Detail: Waterproofing a floor drain**



**Waterproofing swimming pool edges**



## Packaging size

Packaging size of waterproofing tapes and shaped parts:

- PCI Pecitape 120 waterproofing tape for corner and connection joints  
50 m roll, stock no. 1013/6  
10 m roll, stock no. 1014/3
- PCI Pecitape 90°A prefabricated external corner  
stock no. 1018/1
- PCI Pecitape 90° I prefabricated internal corner  
stock no. 1017/4
- PCI Pecitape 42.5 x 42.5 waterproofing collar  
stock no. 1016/7
- PCI Pecitape 10 x 10 waterproofing collar  
stock no. 1015/0

## Please note

- PCI Seccoral 1K must always be applied to the building side exposed to water.
- Mix only as much PCI Seccoral 1K as can be applied within approx. 45 minutes.
- Never add water or fresh PCI Seccoral 1K to reconstitute a mix which has already begun to set.
- Additives to PCI Seccoral 1K are not allowed.
- PCI Seccoral 1K is not authorized for drinking water reservoirs.
- The newly applied coating must be protected from extreme heat, direct sunlight, draught, frost and rain.
- It is not allowed to use PCI Seccoral 1K for areas subject to chemical exposure, e.g. W3-I C.
- The perimeter joint in floating screeds must be free of mortar and waterproofing slurry to avoid acoustical bridges. We recommend for wall/floor connections (see detail drawing) to keep at least 10 mm free from PCI Seccoral 1K in horizontal and vertical direction. Impurities on the perimeter strip must be thoroughly removed before installing the waterproofing tape.
- We recommend the following preparation for gutters made of zinc or zinc-titanium before applying PCI Seccoral 1K: Prime gutter with PCI Elastoprimer 220 (two coats), sprinkle fire-dried silica sand (grain size 0.1 – 0.4 mm) over the newly applied second coat. Allow primer to dry.
- The conveying pump Inomat M8 from Inotec GmbH is suitable for spray application.
- Clean tools, machinery and mixing equipment with water immediately after use; the cured product can only be removed by mechanical scraping.
- Suitable tools are available from e.g. Collomix GmbH, Horchstraße 2, 85080 Gaimersheim/Germany, [www.collomix.de](http://www.collomix.de).
- Shelf life: min. 9 months; store dry, no permanent storage over +30°C.
- Use PCI Apoflex to waterproof splash water reservoirs.
- PCI Seccoral 1K can take mechanical loads up to use class III in accordance with the ZDB code of practice "coverings subject to heavy-duty exposure".

## Declaration of Performance

The Declaration of Performance can be downloaded as pdf file under [www.pci-augsburg.eu/dop](http://www.pci-augsburg.eu/dop).

## Information on the safe use

PCI Seccoral 1K contains cement:

Causes serious eye damage. Causes skin irritation.

Keep out of reach of children. Wear protective gloves (e.g. cotton gloves soaked in nitrile) and eye/face protection. IF IN EYES: Rinse cautiously with water for several minutes. Remove

contact lenses, if present and easy to do. Continue rinsing. Get immediate medical advice/attention. IF ON SKIN: Wash with plenty of soap and water and put skin cream on (pH value approx. 5.5). IF SKIN IRRITATION OCCURS: Get medical advice/attention.

The product is non-flammable. No

special fire precautions are therefore required.

Water hazard class: 1 (self-rating)

Giscode ZP 1

For further information: see PCI Material Safety Data Sheet.

## Services for architects and designers

Consultations at the workplace,  
supplementary information, testing  
certificates and sample descriptions can

be requested from professional advisors  
and at the company headquarters.

## Disposal of emptied PCI sales packaging

PCI participates in an area-wide waste  
disposal system for sales packaging  
completely emptied. DSD – Duales  
System Deutschland (Dual System  
Germany, contract number 1357509) is  
our partner for waste disposal. PCI  
sales packaging completely emptied  
can be disposed of via DSD in

accordance with the symbol printed on  
the packaging. For further information  
on disposal see the safety and  
environmental information in the price  
list and also on the Internet at  
[http://www.pci-augsburg.eu/de/  
service/disposal\\_instructions.html](http://www.pci-augsburg.eu/de/service/disposal_instructions.html).

The working conditions on construction sites and the areas of application of our products are highly diverse. In the technical data sheets, we can only give general instructions for the use of our products. These are in accordance with the information currently available to us. Architects, engineers and the users of our products are under an obligation to verify the suitability of our products and the feasibility of using them for their specific applications. For applications not explicitly referred to under "Area of applications" in the technical data sheet, architects, engineers and users of our products are under an obligation to obtain technical advice from PCI. In the event that the product is used outside the scope of applications defined in the technical data sheet without obtaining the advice of PCI, the user of the product will be liable for any loss or damage arising as a result of the use of the product. All the descriptions, drawings, photographs, data, conditions, weights, etc. stated in the technical data sheet may be changed without notice and do not represent the agreed properties of the product. Recipients of our products are under an obligation to comply with any proprietary rights and any applicable laws and regulations under their own responsibility. If trade names used by other companies are referred to in this technical data sheet, such references do not represent a recommendation for the use of such products and do not exclude the use of other comparable products. The information which we provide only describes the characteristics of our products and services and does not represent any guarantee. A guarantee of specific properties or the fitness of the product for a specific purpose cannot be derived from the information which we provide. We will not be liable for any incomplete or incorrect information in our information material except in the case of wilful act or omission or gross negligence. This disclaimer does not affect any claims under the Produkthaftungsgesetz (Product Liability Act).



### PCI Augsburg GmbH

Piccardstr. 11 · 86159 Augsburg  
Tel. +49 (8 21) 59 01-0  
Fax +49 (8 21) 59 01-372  
[www.pci-augsburg.de](http://www.pci-augsburg.de)



certified quality  
management system

### PCI Seccoral® 1K,

Last revised in February 2022  
(German edition October 2021)

This version will become invalid immediately upon  
the publication of a later version;  
you will always find the latest version on the  
Internet at [www.pci-augsburg.de](http://www.pci-augsburg.de).